

STEP 3 – INSTALL NEW HARD DRIVE

- Remove new drive from its bag and install on bracket with four screws
- Reinstall drive assembly into Replay
- Carefully attach power and data cables to drive (cables fit snugly and are polarized for correct installation)

STEP 4 – REPLACE COVER

- Slide cover back on unit and replace 10 screws

STEP 5 – TEST

- Reconnect all cables and power
- Run setup and verify all settings (if you prefer you can run guided setup from the beginning by performing a system restore – instructions below)
- Enjoy your expanded storage capacity

Ignore any errors you receive regarding your subscription status; they will resolve when the unit connects to the network. You can force a connection from the Special Functions Menu (see instructions below). If you have any trouble, just perform a System Restore.

REPLAYTV SUPPLEMENTAL MENUS

(Activated by entering the 3 digit code followed by the replay zones key on your remote control)

- **411 ZONES** – Information Screen
- **243 ZONES** – Special Functions Menu
- **382 ZONES** – System Restore (Use after unrecoverable errors or prior to resale - completely erases all recordings and setup information)



Self-Installation Instructions – ReplayTV 4000-5000 Series Upgrade



www.replaytivoplus.com
1303 Greystone Ridge
San Antonio, TX 78258

service@replaytivoplus.com

TOOLS REQUIRED

- Phillips screwdriver

PREPARATION

- Unplug unit and allow to cool
- Find a clean static-free work area with plenty of light

STEP 1 – REMOVE COVER

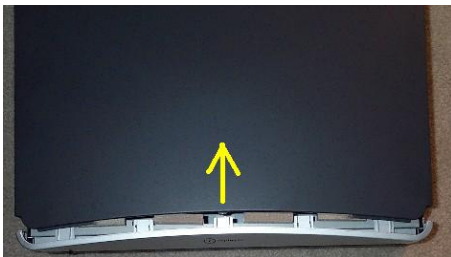
- Remove four Phillips screws from cover back



- Remove three Phillips screws from both cover sides

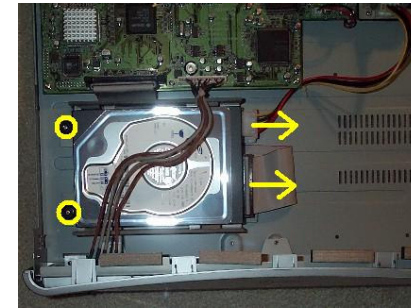


- Slide cover off unit

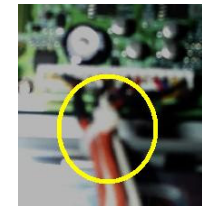


STEP 2 – REMOVE OLD HARD DRIVE

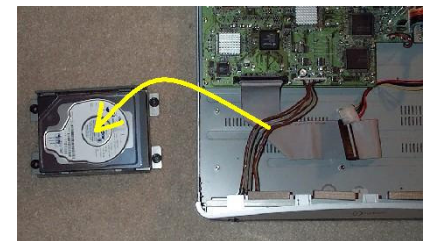
- **USE CAUTION WORKING NEAR POWER SUPPLY!**
- Gently wiggle and pull data and power cables from drive



- Cut plastic strap connecting front panel cable to disk bracket (model 5000 only)



- Carefully remove four Phillips screws holding the disk bracket to the Replay and remove from Replay



- Remove 4 screws holding old drive to bracket



- Place old drive in static bag and store securely